



National  
Qualifications

## Art and Design

Duration – 1 hour and 10 minutes

---

**Total marks — 40**

**SECTION 1 – EXPRESSIVE ART STUDIES - 20 marks**

Attempt Question 1 and ONE other question.

**SECTION 2 - DESIGN STUDIES - 20 marks**

Attempt Question 7 and ONE other question.

**Before attempting the questions you must check that your answer booklet is for the same subject and level as this question paper.**

On the answer booklet, you must clearly identify the question number you are attempting.

You may use sketches to illustrate your answers.

Use **blue** or **black** ink.

Before leaving the examination room you must give your answer booklet to the Invigilator. If you do not, you may lose all the marks for this paper.

## SECTION 1 — EXPRESSIVE ART STUDIES — 20 marks

Attempt this question.

1. Artists communicate and express their ideas about their subject in a variety of ways. Identify two works by different artists that you have studied. These should be based on similar *subject matter* and /or the same *theme*.

With reference to these works in your answer, compare each artist's use of:

- colour
- media handling and techniques
- mood and atmosphere

Which of the two works do you find most appealing? Give **two** reasons.

**10 MARKS**

## SECTION 1 — EXPRESSIVE ART STUDIES (continued)

Attempt ONE question from Q2, Q3, Q4, Q5 or Q6.

Read your selected question and the notes on the illustration carefully.

Image for Q2



*Cubist Still life with Ceramic Bowl and Apples (1927)* by Alfred Henry Maurer  
Oil on canvas

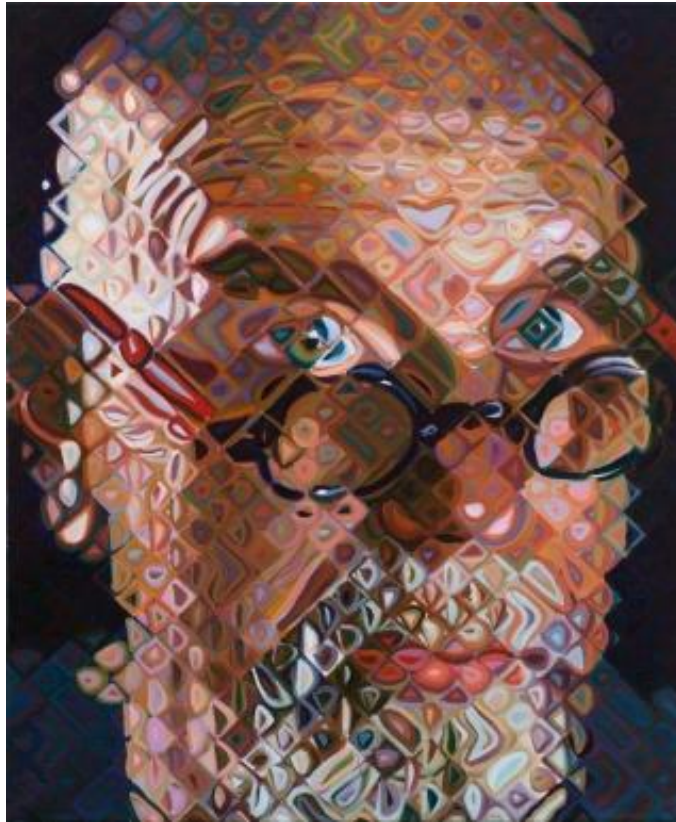
2. Many artists have tried to develop new and interesting ways of responding to everyday subject matter. Comment on how the artist has approached the subject matter in this painting. In your answer, refer to:
- *media handling*
  - *line*
  - *colour*

What is your opinion of this *approach* to still life painting? Give **two** reasons.

**10 MARKS**

**SECTION 1 — EXPRESSIVE ART STUDIES (continued)**

Image for Q4



*'Self-Portrait II'* (2011) by Chuck Close  
Oil paint on canvas (91.4 x 76.2 cm)

3. Many artists use interesting ways to communicate their ideas and feelings. Comment on the *methods* used to create this work. In your answer, refer to:

- media handling
- colour
- composition

What is your opinion on the *mood and character* of this portrait? Give **two** reasons.

**10 MARKS**



**SECTION 1 — EXPRESSIVE ART STUDIES (continued)**

Image for Q5



*Winter Landscape I, Kochel, Bavaria* (1909) by Wassily Kandinsky  
Oil on cardboard (71.5 x 97.5 cm)

4. Artists have always been inspired by the natural world and their surroundings. Comment on the artist's approach to the subject of this painting. In your answer, refer to:
- *composition*
  - *colour*
  - *technique*

What is your opinion on the *mood and atmosphere* of the picture? Give **two** reasons.

**10 MARKS**

## SECTION 2 — DESIGN STUDIES

Attempt this question.

5. Designers have to show creativity in their approach to developing designs. Identify **two** designs by different designers that you have studied who have worked in the same design area.

With reference to these designs, in your answer compare both designs in terms of:

- function
- style
- target market/ audience

Which of these two designs is the most successful? Give **two** reasons why.

**10 MARKS**

## SECTION 2 — DESIGN STUDIES (continued)

Attempt **one question** from Q8, Q9, Q10, Q11 or Q12.

Read your selected question and the notes on the illustration carefully.

Image for Q8



Newspaper advertisement for 'Marathon' candy bar, 1973

6. Graphic designers often have to create visual impact and communicate a message. Comment on the *methods* used by this designer in this newspaper advert for Marathon candy bars. In your answer refer to:

- *imagery*
- *lettering*
- *colour*

How effective is this newspaper advert? Give **two** reasons.

## SECTION 2 — DESIGN STUDIES (continued)

Image for Q9



*Paradise Birds Salt and Pepper*, designed by Giovannoni Stefano for Alessi

Cast in resin and hand decorated  
 dimensions: length:12cm, width:9cm, height: 14cm

7. Designers have to design products that will be fit for purpose and appeal to consumers. Comment on the issues the designers would have considered when developing this product. In your answer, refer to:

- *function*
- *materials*
- *source of inspiration*

Who do you think is the target market for this design? Give **two** reasons.

10 MARK



**SECTION 2 — DESIGN STUDIES (continued)**

Image for Q11



'Band of Rings' (2008) by Marjorie Schick  
Materials: painted wood

8. Jewellery is made and worn for different reasons. Comment on these pieces. In your answer, refer to:

- *inspiration*
- *form*
- *choice of materials*

Who might wear this piece? Give **two** reasons.

**10 MARKS**